



# Migrating XML resources into ArchivesSpace

ArchivesSpace Member Forum 2018  
Celia Caust-Ellenbogen  
Friends Historical Library of Swarthmore College  
[ccauste1@swarthmore.edu](mailto:ccauste1@swarthmore.edu)

# Getting Ready



## TABLE OF CONTENTS

[Short History of the Meeting](#)

**bym**  
bym-rsf.org

Baltimore Yearly Meeting  
of the Religious Society of Friends

Quakers



NEW YORK  
OF THE RELIGIOUS SOCIETY OF FRIENDS

## TABLE OF CONTENTS

[Summary](#)

[SHORT HISTORY OF MEETING](#)

[BRIEF DESCRIPTION OF THE RECORDS](#)

[Restrictions](#)

[Searching in Our On-Line Catalogue for Related Materials](#)

[Administrative Information](#)

[DETAILED DESCRIPTION OF THE RECORDS](#)

[Ministers & Elders/Ministry and Counsel](#)

[State of the Meeting Reports](#)

[Faith and Practice Related Committees](#)

[Haverford College Quaker Collection](#)

[Friends Historical Library of Swarthmore College](#)

[Back to List of Meetings](#)

[Go to New York Yearly Meeting website](#)

## An Inventory of the Allen Family Papers, 1700-1954

(4 boxes; 2 linear ft.)

RG 5/001

© Friends Historical Library of Swarthmore College.  
Swarthmore, Pennsylvania 19081-1399 U.S.A.



### Table of contents

- Background note
- Scope and content
  - Arrangement
- Administrative information
  - Restrictions
  - Preferred citation
  - Provenance
  - Separated materials
- Added entries
- Contact information
- Inventory
  - Ser. 1. Biographical and Genealogical Material, 1839-1935
  - Ser. 2. Correspondence, 1789-1954
  - Ser. 3. Journals and Diaries, 1831-1893
  - Ser. 4. Financial Papers, 1813-1851
  - Ser. 5. Legal Papers, 1849-1950, n.d.
  - Ser. 6. Miscellaneous Papers, 1823-1924, n.d.
- Return to Friends Historical Library
- Return to Tripod

### Abstract

Contains the papers of the Allen Family, a Quaker family of Philadelphia and Delaware County, Pennsylvania, which traced its ancestry back to one of William Penn's commissioners. Includes papers relating to the Allen and related Breidenhart, Cassond, Gibbons, Hubley, Jacobs, Matlack, and Samuel families. The Allen family papers contain extensive genealogical material, family correspondence, journals and memorials which provide excellent source material on Quaker family life in the 19th century in the Philadelphia area. Of particular interest are letters from Charles and Rebecca Allen to their children, several of whom were educated at Westtown School.

## RECORDS OF NEW YORK

A Finding Aid for its Records

### SUMMARY

**Meeting Name:** New York Yearly Meeting  
**Title:** Records of Ministry and Counsel  
**Dates:** 1672-1810  
**Quantity:** ca. 46 linear ft.  
**Repository:** Friends Historical Library of Swarthmore College  
**Location:** For current information, see the online catalog.

### SHORT HISTORY OF MEETING

New York Yearly Meeting was first held in 1672, consisting essentially of the Flushing Quarterly Meeting. Meeting for Sufferings was established in 1700, the business of the Yearly Meeting while it was in session.

[Return to the Table of Contents](#)

### BRIEF DESCRIPTION OF THE RECORDS

Records of the Meeting of Ministry and Counsel and its Orthodox and Hicksite predecessors, the Meetings of Ministers and Elders of New York Yearly Meeting.

## BALTIMORE MONTHLY MEETING FOR THE EASTERN DISTRICT

Records Deposited in Friends Historical Library of Swarthmore College

Records of the Baltimore Monthly Meeting for the Eastern District (Society of Friends : 1807-1819)

1807-1810

in English

Friends Historical Library of Swarthmore College

### MEETING

Baltimore became the City of Baltimore in 1781 after moving from Patapsco, and in 1800 the meeting was formed. The meeting grew quickly, and in 1805 a second meeting was held. In 1807, the large number of Friends in Baltimore led to the creation of the Baltimore Monthly Meeting. The Baltimore Monthly Meeting changed its name to the Baltimore Monthly Meeting for the Eastern District, and the new meeting at Lombard Street became the Baltimore Monthly Meeting for the Western District. Tensions over the Aisquith St. graveyard arose, and resulted in the laying out of the Eastern District by the Yearly Meeting; it became a separate Baltimore Monthly Meeting for the Western District.

### RECORDS

Records of the Baltimore Monthly Meeting of Friends for the Eastern District, and its predecessor Baltimore Monthly Meeting for the Western District, 1792-1810. Includes men's and town minutes, 1792-1810; women's minutes, 1807-1810.

## Records

Includes minutes, reports, and other papers of the Arrangements and Hospitality Committee, 1964-86. Also included are records of the Meal Committee, 1962-86, and the Philadelphia... Full description



NO IMAGE AVAILABLE

Archives and Manuscripts

**Corporate Author:** Philadelphia Yearly Meeting of the Religious Society of Friends. Arrangements and Hospitality Committee.

**Other Authors:** Philadelphia Yearly Meeting of the Religious Society of Friends. Planning Committee.; Philadelphia Yearly Meeting of the Religious Society of Friends. Lunch Committee.; Philadelphia Yearly Meeting of the Religious Society of Friends. Meal Committee.

**Language:** English

**Subjects:** Philadelphia Yearly Meeting of the Religious Society of Friends > Archives. Society of Friends > Pennsylvania > Philadelphia. Society of Friends > Pennsylvania.

### Similar Items

Philadelphia Yearly Meeting Records  
Published: (1668-2018)

Records concerning Administration of Yearly Meeting Funds for the Benefit of Elderly Friends  
Published: (1968-1970)

Memorials  
Published: (1828-1898)

Name index to the minutes of Philadelphia Yearly Meeting (Society of Friends), 1681-1779  
Published: (1994)

Philadelphia Quarterly Meeting Records  
Published: (1828-2018)

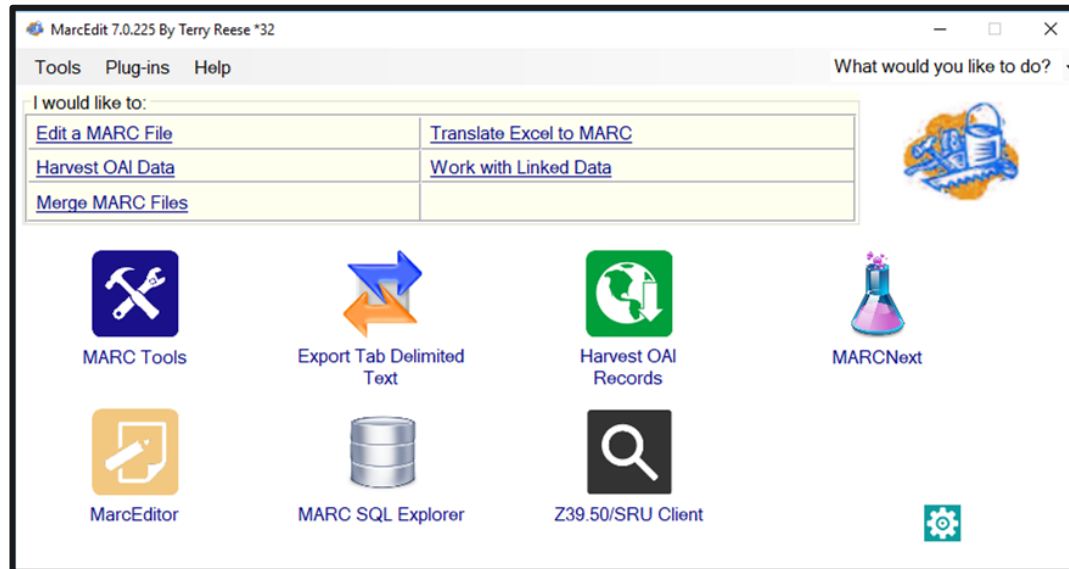
Holdings Description **Staff View**

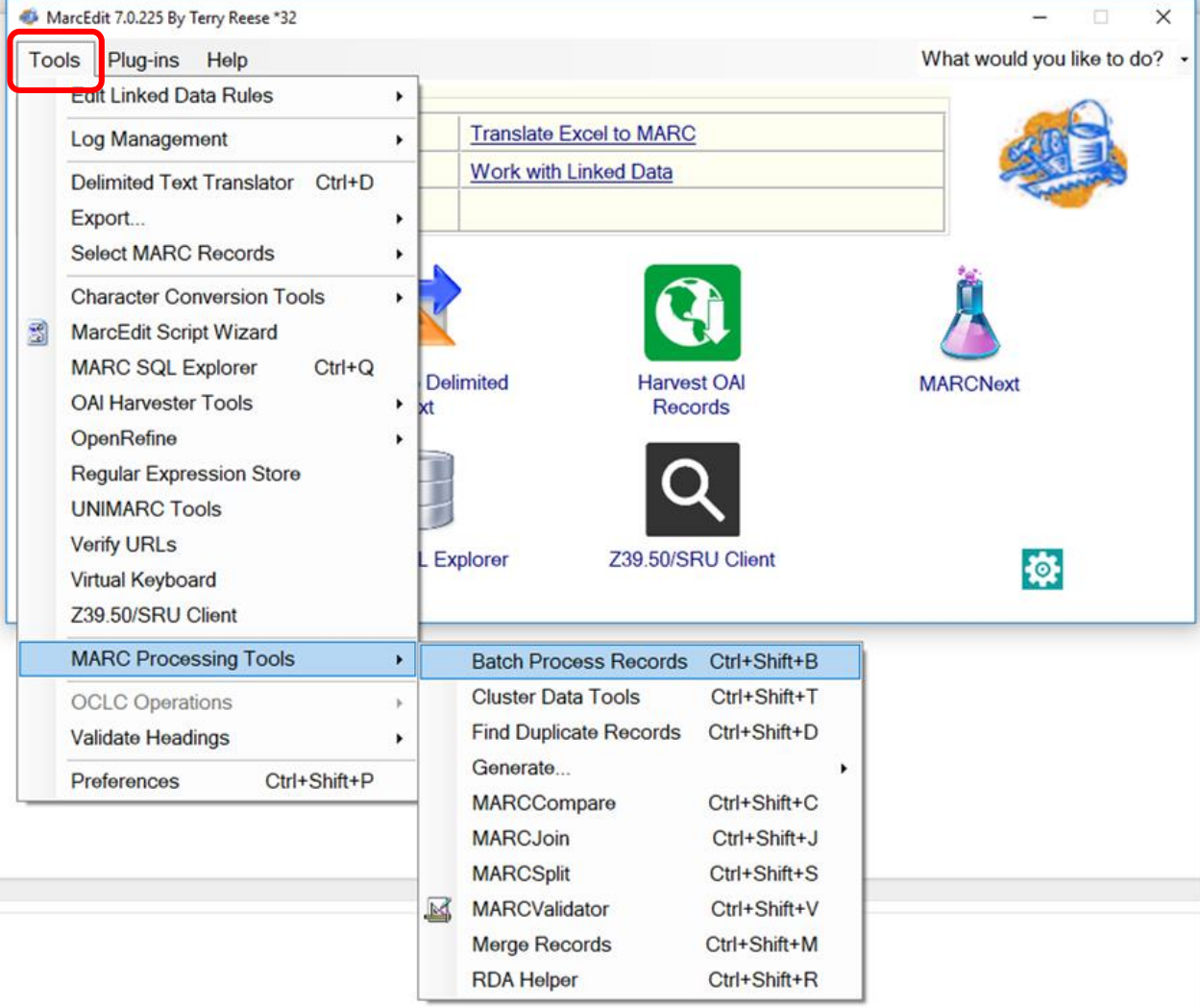
LEADER	02505npdas22003971a	4500	
001	36551507		
005	19970314102439.0		
008	970314i19621986pau	eng d	
040	a PSH  e appm  c PSH		
043	a n-us-pa		
049	a PSHF		
090	a RG2/Phy/346		
090	8 1	b RG2/Phy/346	
099	a RG2/Phy/346		
110	2	a Philadelphia Yearly Meeting of the Religious Society of Friends.  b Arrangements and Hospitality Committee.	
245	1 0	a Records,  f 1962-1986.	



**MarcEdit**

Free! <https://marcedit.reeset.net/>





Tools Plug-ins Help

- Edit Linked Data Rules
- Log Management
- Delimited Text Translator Ctrl+D
- Export...
- Select MARC Records
- Character Conversion Tools
- MarcEdit Script Wizard
- MARC SQL Explorer Ctrl+Q
- OAI Harvester Tools
- OpenRefine
- Regular Expression Store
- UNIMARC Tools
- Verify URLs
- Virtual Keyboard
- Z39.50/SRU Client
- MARC Processing Tools**
- OCLC Operations
- Validate Headings
- Preferences Ctrl+Shift+P

- [Translate Excel to MARC](#)
- [Work with Linked Data](#)

- Batch Process Records Ctrl+Shift+B**
- Cluster Data Tools Ctrl+Shift+T
- Find Duplicate Records Ctrl+Shift+D
- Generate...
- MARCCompare Ctrl+Shift+C
- MARCJoin Ctrl+Shift+J
- MARCSplit Ctrl+Shift+S
- MARCValidator Ctrl+Shift+V
- Merge Records Ctrl+Shift+M
- RDA Helper Ctrl+Shift+R

***Batch Process MARC Records***

Source Directory:

C:\Users\ccauste1\Desktop\ASpace migration junk\SC-MARC



Process

 Include Subfolders

Close

**Options**

File Types:

Function:

- From MARC to Mnemonic
- From MARC to Mnemonic
- From Mnemonic to MARC
- From MARC to MARCXML
- From MARCXML to MARC
- Dublin Core => MARC
- EAD=>HTML
- EAD=>MARC
- FGDC=>MARC
- MARC=>Dublin Core
- MARC=>FGDC
- MARC=>MODS
- MODS=>MARC
- MODS=>MARCXML
- OAIDC=>MARCXML
- OAIMARC21=>MARC21



<https://www.oxygenxml.com/>

Type	Cost per new license (renewals are cheaper)
Academic	\$99
Business	\$688
Individual	\$198
30-day trial	FREE



# Blogs

---


- ArchivesSpace @ Yale  
<http://campuspress.yale.edu/yearchivesspace/>, especially  
<http://campuspress.yale.edu/yearchivesspace/2015/07/22/validation-scenarios/>
- Bentley  
<http://archival-integration.blogspot.com/>, especially <http://archival-integration.blogspot.com/2015/05/legacy-ead-clean-up-getting-started.html>
- Chaos → Order  
<https://icantiemyownshoes.wordpress.com/>, especially  
<https://icantiemyownshoes.wordpress.com/category/eads-in-aggregate/>
- Way More at **Awesome ArchivesSpace!**  
<https://github.com/archivesspace/awesome-archivesspace#migrations>

# Getting started



# Test imports in the Sandbox (or your dev server)

<http://sandbox.archivesspace.org/>



**ArchivesSpace**  
a community served by + LYRASIS

[Home](#) [Repositories](#) [Collections](#) [Digital Objects](#) [Unprocessed Material](#) [Subjects](#) [Names](#) [Classifications](#) [Q](#)

## Alexandria Monthly Meeting Records

**Collection** Identifier: B/A441

Escola Municipal Maria da Terra | Alexandria Monthly Meeting Records

[Collection Overview](#) [Collection Organization](#) [Container Inventory](#)

Records of Alexandria Monthly Meeting, 1802-2011. Includes men's and joint minutes 1802-1933, 1946-59, 1964-2011 (with a few gaps), women's minutes 1853-77, vital records 1823-1940, Ministers and Elders minutes 1829-1944, financial and property records 1802-1906 and 1933-34, committee records 1927-31, and miscellaneous 1960-2003.

**Dates**  
1802-2011

**Language of Materials**  
Records in English

**Conditions Governing Access**  
Collection is open for research. Access is through microfilm, if available.

**Conditions Governing Use**  
Copyright has not been assigned to the Repository. All requests for permission to publish or quote from manuscripts must be submitted to the individual Meeting or its successor. Permission for publication is given on behalf of the Repositories as the holder(s) of the physical items and is not intended to include or imply permission of the copyright holder, which must also be obtained by reader.

**Extent**  
2 linear feet

[Citation](#) [Print](#) [Staff Only](#)

# Test imports in the Sandbox (or your dev server)

<http://sandbox.archivesspace.org/>

## Log

```
!!!!!!!!!!!!!!!!!!!!!!!!!!!!!!!!!!!!!!!!!!!!!!!!!!!!!!!!!!!!!!  
IMPORT ERROR  
!!!!!!!!!!!!!!!!!!!!!!!!!!!!!!!!!!!!!!!!!!!!!!!!!!!!!!!!!!!!!!
```

```
The following errors were found:  
    dates/0/end : must not be before begin
```

```
For JSONModel(:archival_object):  
#<JSONModel(:archival_object) {"jsonmodel_type"=>"archival_object", "external_ids"=>[], "subjects"=>[], "linked_events"=>[], "extents"
```

```
In :  
&lt;c02 class=&quot;cdata&quot; level=&quot;file&quot;&gt; ... &lt;/c02&gt;
```

# Mark Custer's EAD-validation schematron

<https://raw.githubusercontent.com/fordmadox/schematrons/master/ArchivesSpace-EAD-validator.sch>

```
<?xml version="1.0" encoding="UTF-8"?>
<schema xmlns="http://purl.oclc.org/dsdl/schematron"
  xmlns:sqf="http://www.schematron-quickfix.com/validator/process"
  queryBinding="xslt2">
  <ns uri="http://www.w3.org/1999/xlink" prefix="xlink"/>
  <ns uri="urn:isbn:1-931666-22-9" prefix="ead"/>
  <!-- eventually, this file should test for all of the ASpace "EAD" requirements prior to import
    (still need to figure what all of those are, including all undocumented data model constraints, etc.)

for the time being, i removed namespace checks so that the same rules will work for DTD and/or schema-associated files.

  still to add:
    dao stuff (must have title and href attributes?)
    something about field lengths (also need to test for length of title / unit ids, etc.)... if something is too long for the database, etc., like the 65k character limit :(
    what else??

  still to do:
    re-write the error messages!
    make sure that the error messages include everything needed
    pray that i can use xpath 2.0, as i've done here
    group and arrange this file like a semi-decent schematron file should actually be structured (and learn how to do that!)

-->

<pattern>
  <rule context="*:archdesc">
    <assert test="@level">You must supply a level attribute at the resource level</assert>
  </rule>
  <rule context="*:archdesc/*:did">
    <assert test="*:unittitle[normalize-space()]">You must supply a
      title at the resource level</assert>
    <assert test="descendant::*:unitdate[normalize-space()] or descendant::*:unitdate[@normal]"
      >You must supply a date at the resource level (including as child of unittitle)</assert>
```



XPath 2.0 - Execute XPath on 'Current File'

Project

ASMF.xpr

New

Add Folder...

Add Files...

Open All Files

Show in Explorer

Copy Location

Paste Ctrl+V

Refactoring

Refresh F5

Fjnd/Replace in Files... Ctrl+Shift+H

XPath in Files...

Open/Find Resource... Ctrl+Shift+R

Check Spelling in Files...

Format and Indent Files...

Transform

Validate

Detect Master Files...

Enable Master Files Support

7015sra.xml

7016shs.xml

7019narbeth.xml

7020hort.xml

7021tree.xml

7022svsc.xml

7023bern.xml

MSS054removals.xml

MSS055disownments.xml

WelshSociety2.xml

The Master Files support is disabled

Enable Read more

Project Open/Find Resource

### Create New

- New Document...
- New Project...

### Recent Files

- WelshSociety2.xml
- langadds.xml
- MSS047sermons.xml
- MSS055disownments.xml
- MSS054removals.xml
- 7107.xml
- Open file...

### Learn <Oxygen/>

- JSON Validation Support
- Creating a Publishing Template to C...

### Upcoming Events

- Balisage 2018**  
The Markup Conference  
July 31-August 3, 2018  
Rockville, Maryland, USA
- XML summer school**  
XML Summer School  
September 9-14, 2018  
Oxford, United Kingdom

### Validate

- Check Well-Formedness
- Validate
- Validate with Schema...**
- Configure Validation Scenario(s)...
- Open Project...

### Validate with

URL:

Schema type:   Embedded schematron rules

Public ID:

Schematron phase:

OK Cancel

# ArchivesSpace MARCXML Import / Export Map

<http://archivesspace.org/wp-content/uploads/2016/08/MARCXML-Import-Export-Mapping-20130715.xlsx>

Import Mapping for Resources from MARCXML to ArchivesSpace							
Last Updated: 7/15/2013							
MARC Datafields				Processing / Formatting Directions		ArchivesSpace Properties	
Tag	ind1	ind2	Subfield code		Object	Property	
100	600	700					
				IF field = 600	agent	role = 'subject'	
				IF field = 100   700	agent	role = 'source'	
				AND either \$e relator term OR \$4 relator code = Auctioneer (auc)   Bookseller (bsl)   Collector (col)   Depositor (dpt)   Donor (dnr)   Former owner (fmo)   Funder (fnd)   Owner (own)			
				ELSE	agent	role = 'creator'	
	0			IF indicator 1 = 0	agent	agent_type = 'agent_person'	
					name_person	name_order = 'direct'	
	1			IF indicator 1 = 1	agent	agent_type = 'agent_person'	
					name_person	name_order = 'direct'	
	3			IF indicator 1 = 3	agent	agent_type = 'agent_family'	
				IF field = 100   700	name_family OR name_person	source = ingest	
				ELSE	name_family OR name_person	source = ingest	
			0 - Library of Congress Subject He	IF indicator 2 = 0	name_family OR name_person	source = lcsch	
			1 - LC subject headings for childre	IF indicator 2 = 1	name_family OR name_person	source = lcschac	

# Known issues/bugs in JIRA

<https://archivesspace.atlassian.net>

Issues and filters > Open issues

**Open issues** — Edited Save as ▾

Project: All ▾ Type: All ▾ Status: All ▾ Assignee: All ▾ **EAD import** More ▾ 🔍 **Advanced**

Resolution: Unresolved ▾

Order by Priority ▾

- ANW-498 As a project manager, I need Digital Object METS exports to contain metadata ...
- ANW-406 As an archivist, I would like to see improved error messages/ suggestions on E...
- ANW-724 EAD importer does not honor audience="internal" tag at the <EAD> level
- ANW-351 As a repository manager, I want the @render attribute, used in titles, notes, etc...
- ANW-275** **Data model doesn't support unordered lists, broken ordered lists are generated.**
- ANW-641 Review and revise EAD import for resources
- ANW-223 EAD Import: contents of chronlist duplicated on import
- ANW-150 Physdesc/dimensions/physfacet note label values are not included in EAD expo...
- ANW-152 EAD importer not importing @authflnumber for agents
- ANW-149 EAD physdesc/@label is not mapped during import, but it should be
- ANW-156 EAD Import (from one instance of AS to another) miswrites the Resource ID

ArchivesSpace New Workflow / ANW-275 5 of 19 ▾

### Data model doesn't support unordered lists, broken ordered lists are generated.

Comment

Type: **Bug**

Status: **AWAITING PRIORITIZA...**

Priority: **Major**

Resolution: Unresolved

Affects Version/s: 2.2.1

Fix Version/s: None

Labels: **EAD** **import/export**

Environment: All

**Description**

ArchivesSpace does not currently support unordered lists at all at a model level. The numeration field is mapped naively (1-1, no nil checks) to the note\_orderedlist\_enumeration, which is a dynamic enum. When selecting values for this enumeration in the interface, leaving it blank produces a field with " as the numeration value, and this is being handled specially in some

Assignee: Unassigned

Reporter: Dave Mayo

Votes: **1** Remove vote for this issue

Watchers: **3** Stop watching this issue

Created: 20/Nov/17 12:07 PM









Updated: 16/May/18 2:58 PM



# Using Oxygen

---

## Changes to be performed

-  C:\Users\ccauste1\Desktop\ASpace migration junk\ASpaceEADtesting\RG4copies\4004affe.xml
-  C:\Users\ccauste1\Desktop\ASpace migration junk\ASpaceEADtesting\RG4copies\4010beho.xml
-  C:\Users\ccauste1\Desktop\ASpace migration junk\ASpaceEADtesting\RG4copies\4030frho.xml
-  C:\Users\ccauste1\Desktop\ASpace migration junk\ASpaceEADtesting\RG4copies\4058PYFA.xml
-  C:\Users\ccauste1\Desktop\ASpace migration junk\ASpaceEADtesting\RG4copies\4082frwo.xml
-  C:\Users\ccauste1\Desktop\ASpace migration junk\ASpaceEADtesting\RG4copies\4098frem.xml
-  C:\Users\ccauste1\Desktop\ASpace migration junk\ASpaceEADtesting\RG4copies\4105trfr.xml
-  C:\Users\ccauste1\Desktop\ASpace migration junk\ASpaceEADtesting\RG4copies\4107Novel.xml

Select all

Deselect all

Next Change

Previous Change

230	Friends--Congresses </subject>	Friends--Congresses </subject>	230
231	<subject	<subject	231
231	encodinganalog="650">Society of	encodinganalog="650">Society of	231
231	Friends--Connecticut	Friends--Connecticut	231
232	--Hartford </subject>	--Hartford </subject>	232
233	<subject	<subject	233
233	encodinganalog="650">Society of	encodinganalog="650">Society of	233
233	Friends--Connecticut --New	Friends--Connecticut --New	233
234	Haver</subject>	Haver<subject>	234
235	<subject encodinganalog="650">	<subject encodinganalog="650">	235
235	Society of	Society of	235
236	Friends--Connecticut--Middletown	Friends--Connecticut--Middletown	236
236	</subject>	</subject>	236
237	<subject encodinganalog="650">	<subject encodinganalog="650">	237
237	Society of Friends--Connecticut--Weston	Society of Friends--Connecticut--Weston	237
238	</subject>	</subject>	238
239	<subject encodinganalog="650">	<subject encodinganalog="650">	239

OK

Cancel



### Project

ASMF.xpr

- ASMF.xpr
  - RG2B
  - RG2NY
  - RG2other
  - RG2Ph
  - RG4
  - RG5
  - RG6
  - RG7
    - 7001woma.xml
    - 7003rota.xml
    - 7005lungren.xml
    - 7006chautauqua.xml
    - 7007friendly.xml
    - 7008league.xml
    - 7009bank.xml
    - 7010troop16.xml
    - 7011village.xml
    - 7012nativity.xml
    - 7013poets.xml
    - 7014zimmer.xml
    - 7015sra.xml
    - 7016shs.xml
    - 7019narbeth.xml
    - 7020hort.xml
    - 7021tree.xml
    - 7022swsc.xml
    - 7023bern.xml
    - MSS054removals.xml
    - MSS055disownments.xml
    - WelshSociety2.xml

The Master Files support is disabled

[Read more](#)

#### Create New

- 
- 

#### Recent Files

- WelshSociety2.xml
- langadds.xml
- MSS047sermons.xml
- MSS055disownments.xml
- MSS054removals.xml
- 7107.xml
- 

#### Recent Projects

- dromio.xpr
- sample.xpr
- 

#### Learn <oXygen/>



JSON Validation Support



Creating a Publishing Template to C...

#### Upcoming Events



Balisage 2018 - The Markup Confere...  
July 31-August 3, 2018  
Rockville, Maryland, USA



XML Summer School  
September 9-14, 2018  
Oxford, United Kingdom

#### Resources

- 

#### Tip of the Day

Check and correct spelling errors on the fly. Enable automatic spell checking in Options -> Preferences -> Editor / Spell Check -> Automatic Spell Check. When a misspelled word is highlighted right-click on the word and go to the Spelling submenu to learn the word or replace it with



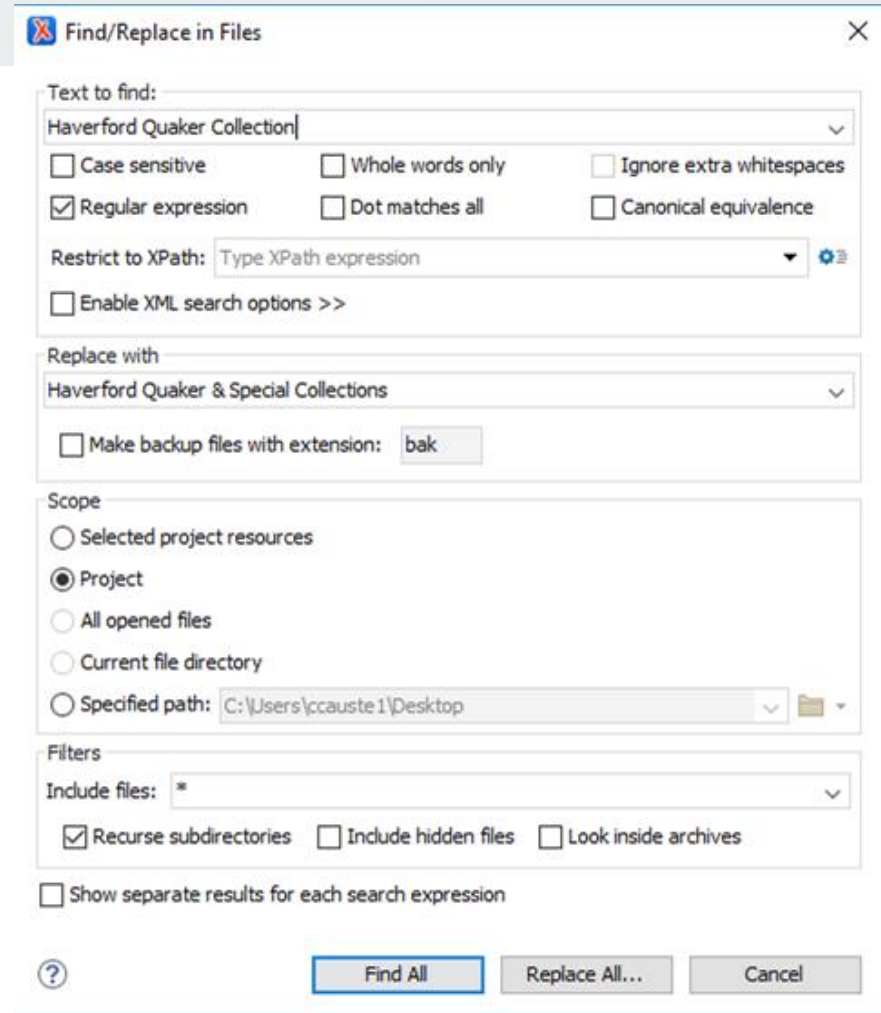
## Problem

**I need to  
find/replace text in  
a bunch of files.**

Example: change  
“Haverford Quaker  
Collection” to  
“Haverford Quaker &  
Special Collections”

## Easy find/replace

- Extra periods at end of subject
- - - instead of -- in subjects
- `<language>English</language>`  
instead of  
`<language>ENG</language>`
- Empty `<p/>` tags





## Problem

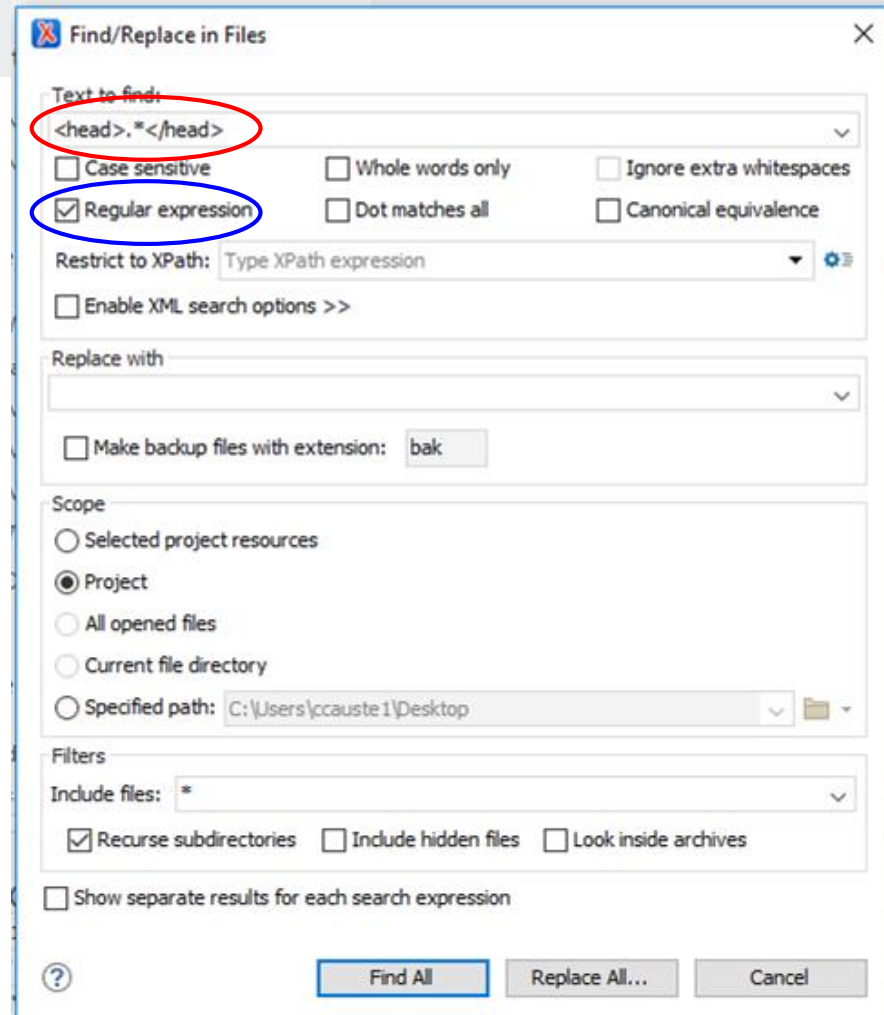
I need to delete a tag and anything it contains across all my files.

Example: delete all the note head labels

```
76 <arrangement encodinganalog="3516a">
77 <head id="a4">Organization of the Records</head>
78 <p>Divided into series: Minutes (men's &amp; joint): 1.1 1840-1894, 1.2
79 1894-1915; women's minutes: 2.1 1840-1869; vital records:, 3.1 1840-1915;
80 Ministers and Elders records: 4.1 1841-87, 4.2 1887-94; Property: 5.1 Deeds and
81 Property Records 1898-1908; Misc.: 6.1 Correspondence 1856-1915.</p>
82 </arrangement><descgrp>
```

Do a lot more with a tiny bit of RegEx...

. \* - anything





## Problem

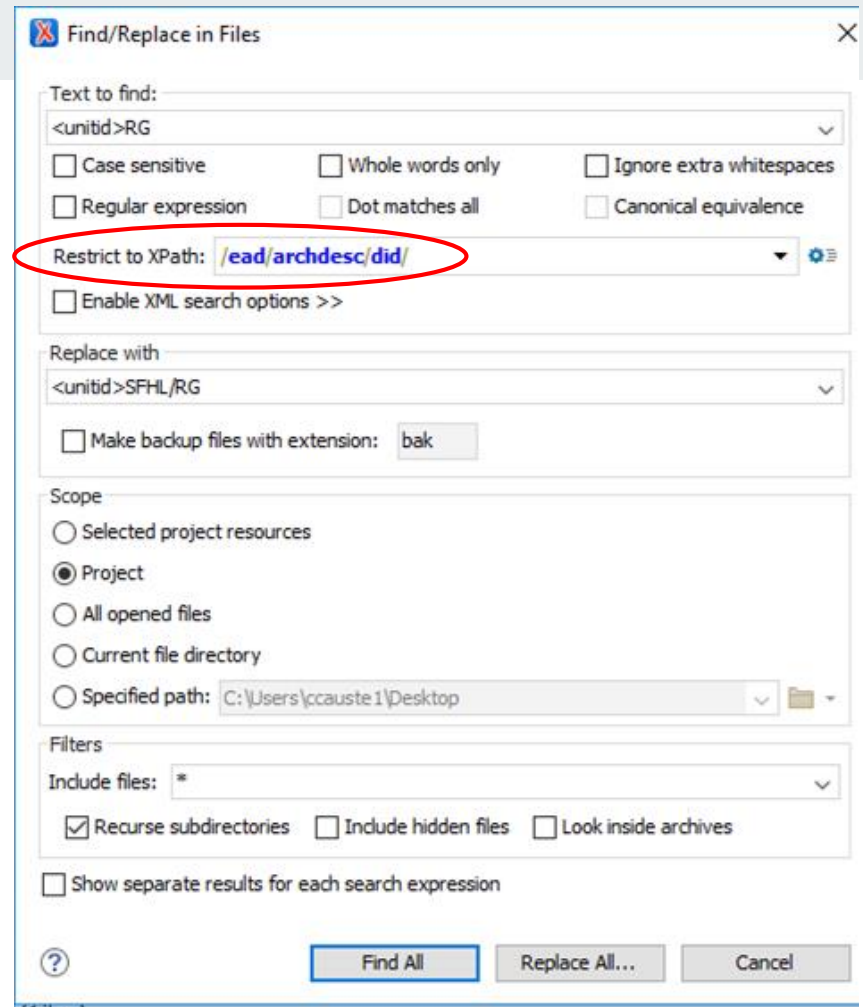
**I need to make a change, but only in a certain field**

Example: add a prefix to identifier at collection-level only



Do a lot more with a tiny bit of XPath...

/node/node/...etc



# How to find the XPath

/ead

/archdesc[1]

/dsc[1]

/c01[3]

/c02[1]

/did[1]

/unittitle[1]

The screenshot shows an XML document with the following structure:

```
ead archdesc dsc c01 c02 did unittitle
198 <c01 level="series">
199   <did>
200     <unittitle><emph render="bold">Women's Meeting</emph></unittitle>
201   </did>
202 </c01>
203 <c02>
204   <did>
205     <unittitle>M...
206     <unitdate>184...
207     <physdesc>1 v...
208     <physloc>RG2/1...
209   </did>
210 <altformavail type="text">
211   <p>Available o...
212   <list>
213     <defitem>
214       <label>S...
215       <item>Fi...
216     </defitem>
217   </list>
218 </altformavail>
219 </c02>
220 </c01>
221 <c01 level="series">
222   <did>
223     <unittitle><emph...
224     predecessors<
```

A context menu is open over the XML code, with the 'Copy XPath' option highlighted. The menu items are:

- Cut (Ctrl+X)
- Copy (Ctrl+C)
- Copy XPath**
- Paste (Ctrl+V)
- Toggle Comment (Ctrl+Shift+Comma)
- Go to
- Select
- Source
- Modify all matches
- Show Definition (Ctrl+Shift+Enter)
- Refactoring
- Manage IDs
- Quick Assist (Alt+1)
- Open
- Compare...
- Resource Hierarchy (F4)
- Resource Dependencies (Shift+F4)

```
msplit00000043.xml* x
marc:collection marc:record marc:datafield marc:subfield
57 <marc:datafield tag="600" ind1="1" ind2="0">
58   <marc:subfield code="a">Ogden, Charles Smith,</marc:subfield>
59   <marc:subfield code="d">b. 1822.</marc:subfield>
60 </marc:datafield>
```

Do a lot more with a tiny bit of XPath...

select attributes with  
[`@tag="XXX"`]

or ignore with  
[`not(@tag="XXX")`]

Find/Replace in Files

Text to find: b.

Case sensitive  Whole words only  Ignore extra whitespaces  
 Regular expression  Dot matches all  Canonical equivalence

Restrict to XPath: `/marc:collection/marc:record/marc:datafield[@tag="600"]/marc:subfield[@code="d"]`

Enable XML search options >>

Replace with

Make backup files with extension: bak

Scope

Selected project resources  
 Project  
 All opened files  
 Current file directory  
 Specified path: C:\Users\ccauste1\Desktop

Filters

Include files: \*

Recurse subdirectories  Include hidden files  Look inside archives

Show separate results for each search expression

Find All Replace All... Cancel



## Problem

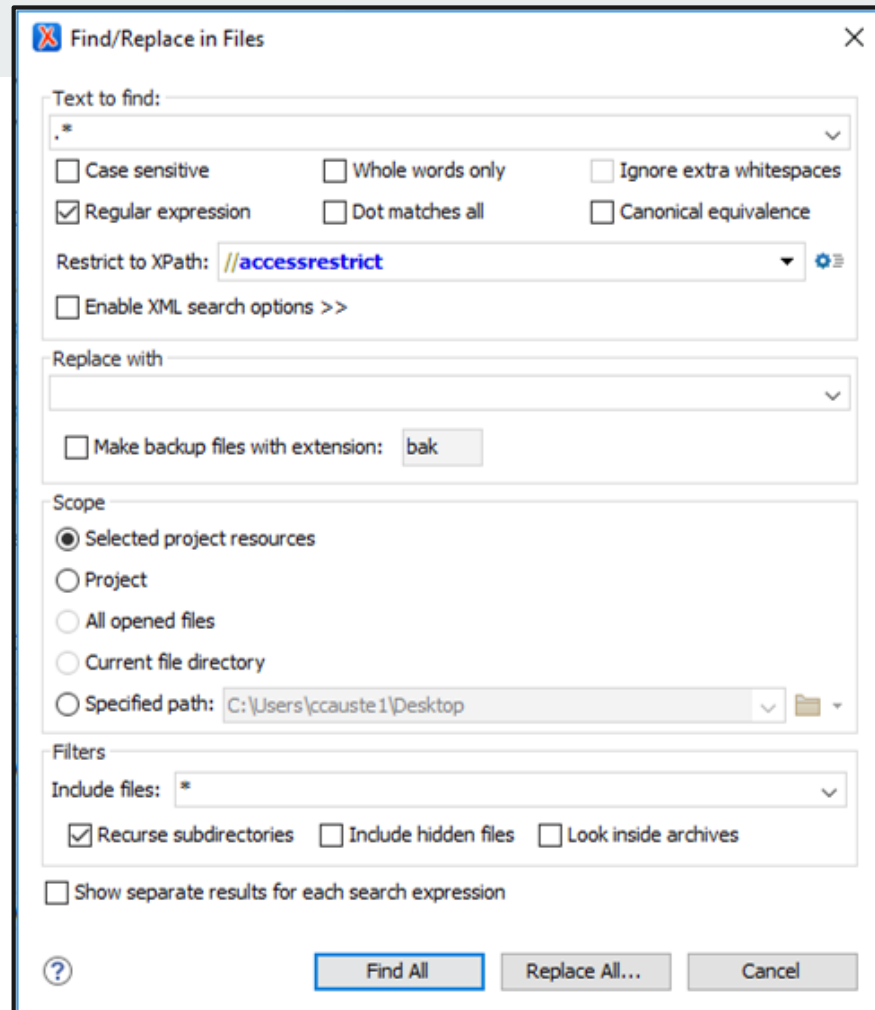
**I want to review the contents of a tag in all my files**

Example: verify access restrictions are consistent

Do a lot more with a tiny bit of XPath...

//tag

find tag wherever it is





XPath 2.0 ▾ Execute XPath on 'Current File'

## Project

ASMF.xpr ▾

- 4007anas.xml
- 4008frsh.xml
- 4009asfr.xml
- 4010beho.xml
- 4011bauu.xml
- 4012byha.xml
- 4013byli.xml
- 4014bysc.xml
- 4015ceem.xml
- 4016chfr.xml

The Master Files support is disabled

Enable

[Read more](#)

Project Open/Find Resource

4008frsh.xml X

ead archdesc descgrp accessrestrict p

```

113      <p>Gift of The Shelter, Acc. 2012.017</p>
114      </acqinfo>
115      <accessrestrict>
116      <head>Access</head>
117      <p>Access is through microfilm when available. Collection is open to research.</p>
118      </accessrestrict>
119      <userrestrict>
120      <head>Use Restrictions</head>
121      <p>Copyright has not been assigned to Friends Historical Library. All requests for
122      permission to publish or quote from manuscripts must be submitted in to the
123      Director. Permission for publication is given on behalf Friends Historical
124      Library as the owner of the physical items and is not intended to include or
125      imply permission of the copyright holder, which must also be obtained by
126      reader.</p>
127      </userrestrict>

```

Text Grid Author

Description - 489 items ^

```

<p>Collection is open for research.</p>
</accessrestrict>
<accessrestrict>
  C:\Users\ccauste1\Desktop\ASpace migration junk\ASpaceEADtesting\RG4copies\4006afrc.xml (3 items)
  <p>The collection is open for research.</p>
  </accessrestrict>
  <accessrestrict>
  C:\Users\ccauste1\Desktop\ASpace migration junk\ASpaceEADtesting\RG4copies\4007anas.xml (3 items)
  </accessrestrict> <userrestrict> <p>Access is through microfilm, when available.</p> <...
  <accessrestrict>
  <p>Collection is open for research.</p>
  C:\Users\ccauste1\Desktop\ASpace migration junk\ASpaceEADtesting\RG4copies\4008frsh.xml (4 items)
  <head>Access</head>
  <p>Access is through microfilm when available. Collection is open to research.</p>
  </accessrestrict>
  <accessrestrict>
  C:\Users\ccauste1\Desktop\ASpace migration junk\ASpaceEADtesting\RG4copies\4009asfr.xml (4 items)

```

Find in Files X



## Extra Credit Problem

**I need a list of all  
the tags I'm using**

Beware: some  
MARC fields are  
silently dropped  
from import

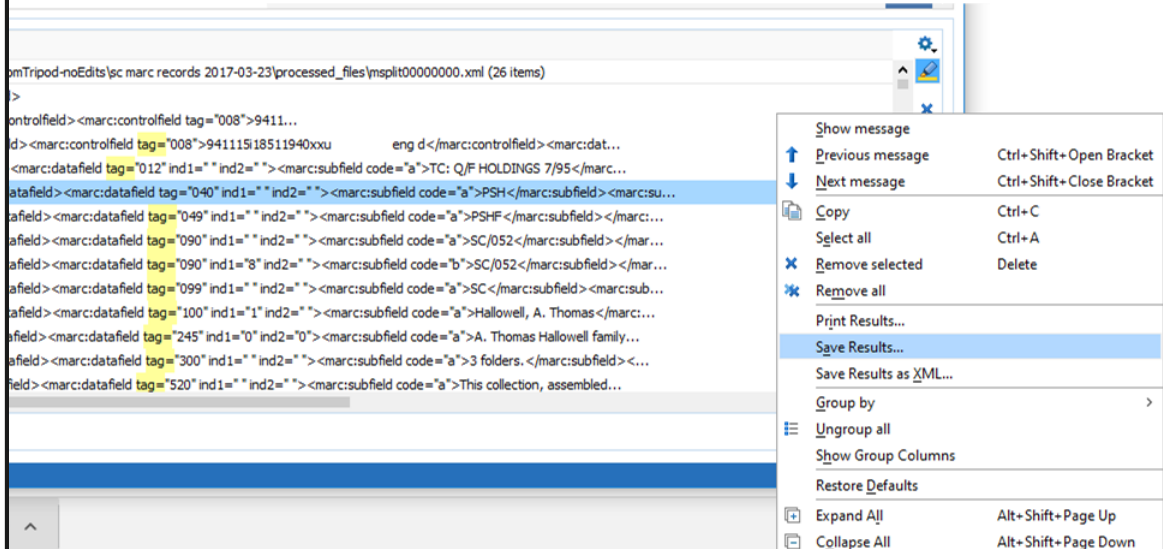
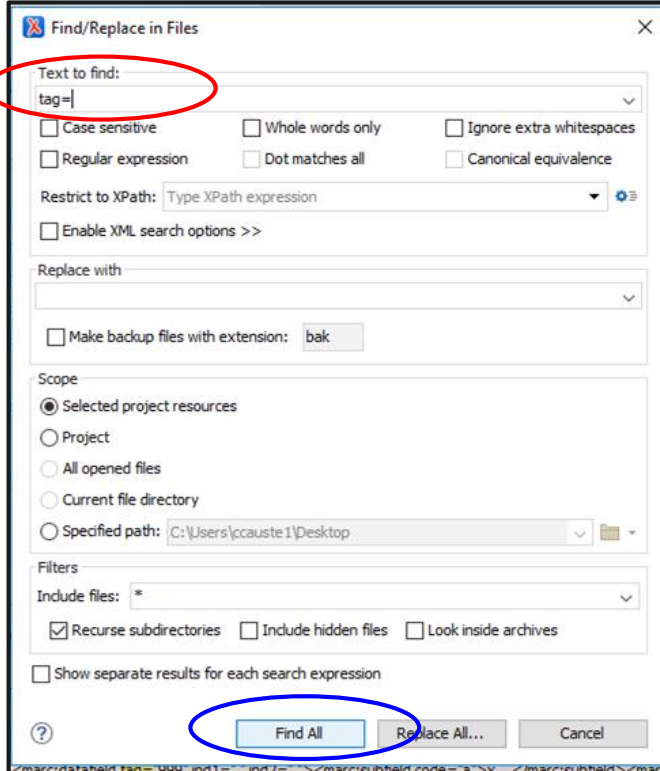
# ArchivesSpace MARCXML Import / Export Map

<http://archivesspace.org/wp-content/uploads/2016/08/MARCXML-Import-Export-Mapping-20130715.xlsx>

Import Mapping for Resources from MARCXML to ArchivesSpace							
Last Updated: 7/15/2013							
MARC Datafields				Processing / Formatting Directions		ArchivesSpace Properties	
Tag	ind1	ind2	Subfield code		Object	Property	
100	600	700					
				IF field = 600	agent	role = 'subject'	
				IF field = 100   700	agent	role = 'source'	
				AND either \$e relator term OR \$4 relator code = Auctioneer (auc)   Bookseller (bsl)   Collector (col)   Depositor (dpt)   Donor (dnr)   Former owner (fmo)   Funder (fnd)   Owner (own)			
				ELSE	agent	role = 'creator'	
	0			IF indicator 1 = 0	agent	agent_type = 'agent_person'	
					name_person	name_order = 'direct'	
	1			IF indicator 1 = 1	agent	agent_type = 'agent_person'	
					name_person	name_order = 'direct'	
	3			IF indicator 1 = 3	agent	agent_type = 'agent_family'	
				IF field = 100   700	name_family OR name_person	source = ingest	
				ELSE	name_family OR name_person	source = ingest	
			0 - Library of Congress Subject He	IF indicator 2 = 0	name_family OR name_person	source = lcsch	
			1 - LC subject headings for childre	IF indicator 2 = 1	name_family OR name_person	source = lcschac	



# Get all tags



# Clean in Excel

The screenshot shows the Microsoft Excel interface. The ribbon is set to 'Home'. The formula bar for cell B1 contains the formula: `=MID(A1,FIND("tag=",A1)+5,3)`. Below the formula bar, a table is displayed with columns A, B, and C. The data in column A is as follows:

	A	B	C
1	System ID: C:\Users\ccauste1\Desktop\ASpace migration junk\SC-MARC-fromTripod-noEdits\sc marc recce	#VALUE!	
2	Description: <marc:controlfield tag="001">31456886</marc:controlfield>	001	
3	Match: tag=		
4	Start location: 3:20	#VALUE!	
5	Length: 4	#VALUE!	
6		#VALUE!	
7	System ID: C:\Users\ccauste1\Desktop\ASpace migration junk\SC-MARC-fromTripod-noEdits\sc marc records 2	#VALUE!	
8	Description: <marc:controlfield tag="005">19941115112524.0</marc:controlfield><marc:controlfield tag="008">005		
9	Match: tag=		
10	Start location: 4:20	#VALUE!	
11	Length: 4	#VALUE!	
12		#VALUE!	

Formula =MID(A1,FIND("tag=",A1)+3,LEN(A1))



**Thank you!**

**[ccauste1@swarthmore.edu](mailto:ccauste1@swarthmore.edu)**



# **ArchivesSpace and CSV metadata**

Bria Parker

*Head, Discovery and Metadata Services*

*University of Maryland Libraries*

Where we were...



# Accessions

- OpenRefine
  - Normalize date formats (yyyy-mm-dd, etc.)
  - Normalize extents (lin ft → linear\_feet)
  - Apply controlled vocabularies
  - Make other metadata consistent (e.g. contacts)

# OpenRefine is...

A free tool for cleaning your data.

This includes:

- normalization
- parsing/splitting
- batch transformation
- reconciliation
- data fetching

(Formerly known as Google Refine)



# OpenRefine...

- Get started by going to <http://openrefine.org/>
- Tutorials:
  - <https://blogs.library.duke.edu/bitstreams/2015/05/01/metadata-adventures/>
  - <http://thomaspadilla.org/dataprep/>
  - <http://journal.code4lib.org/articles/11179>
  - <http://archival-integration.blogspot.com/2015/06/normalizing-dates-with-openrefine.html>

# Extent normalization

lin feet
lin foot
lin ft
linear ft
lin. feet
linear feet
linear foot
lin. ft.

_type	extent_1_type	extent_1_contain	extent_1_number	extent_1_dimension	
	Facet	Text facet	3		silver citations
	Text filter	Numeric facet			
	Edit cells	Timeline facet			
	Edit column	Scatterplot facet			
	Transpose	Custom text facet...	118		CDs
	Sort...	Custom numeric facet...			
	View	Customized facets	0.1		
	Reconcile		0.2		
	linear feet		9		
	linear feet		22.5		
	linear feet		4.5		

**x extent\_1\_type**

[change](#)

33 choices Sort by: **name** count

Cluster

file 10

film reels 16

floppy disks 1

folders 78

item [composed of two parts] 1

items 1813

items 2

[edit](#) [include](#)

items approximately 1

leaves 2

linear feet 1060

linear feet 1

linear feet; oversized items 1

linear inch 2

negatives (photographic) 8

photographic prints 202

poster 4

## Cluster & Edit column "Column 6"

This feature helps you find groups of different cell values that might be alternative representations of the same thing. For example, "New York" and "New York City" are very likely to refer to the same concept and just have capitalization differences, and "Gödel" and "Godel" probably refer to the same person.

Method

Keying Function

Cluster Size	Row Count	Values in Cluster	Merge?	New Cell Value
5	197	<ul style="list-style-type: none"><li>• b&amp;w (178 rows)</li><li>• b&amp;w. (12 rows)</li><li>• b&amp;w. (5 rows)</li><li>• b&amp;w : (1 rows)</li><li>• b&amp;w, (1 rows)</li></ul>	<input type="checkbox"/>	<input type="text" value="b&amp;w"/>
5	1667	<ul style="list-style-type: none"><li>• 16 mm. (1509 rows)</li><li>• 16 mm. + (148 rows)</li><li>• 16 mm + (8 rows)</li><li>• 16 mm . (1 rows)</li><li>• ;16 mm. (1 rows)</li></ul>	<input type="checkbox"/>	<input type="text" value="16 mm."/>
4	201	<ul style="list-style-type: none"><li>• col. (196 rows)</li><li>• col. (2 rows)</li><li>• col., (2 rows)</li><li>• col (1 rows)</li></ul> <p><a href="#">Browse this cluster</a></p>	<input type="checkbox"/>	<input type="text" value="col."/>
3	38	<ul style="list-style-type: none"><li>• 16mm. (31 rows)</li><li>• 16mm + (4 rows)</li><li>• 16mm. + (3 rows)</li></ul>	<input type="checkbox"/>	<input type="text" value="16mm."/>
2	6	<ul style="list-style-type: none"><li>• color. (5 rows)</li><li>• color, (1 rows)</li></ul>	<input type="checkbox"/>	<input type="text" value="color."/>

# Date normalization

Borrowed and adapted scripts and process from University of Michigan Bentley Library (<https://github.com/bentley-historical-library>)

- Programmatically identify common date formats and insert the normal attribute in the correct date format in the EAD (for XML)
- Also provided guidance for extracting dates from EAD in .csv format and working with them in OpenRefine
- The same tools worked for more than EAD XML (hint: csv!)

# Regular Expressions

- Very powerful tool for dealing with dates, or any alphanumeric data that needs to be structured
- Way of representing alpha-numeric patterns.

**normalized**

case sensitive     regular expression

`^[A-Za-z].+ \d{1,2}, \d{4}|`

November 11, 1994	<a href="#">edit</a>
November 28, 1991	
November 14, 1932	
January 18, 1954	
May 25, 1943	
December 15, 1947	
January 9, 1955	
January 9, 1955	
October 25, 1955	
June 13, 1989	
October 31, 2004	

## Custom text transform on column normalized

Expression

Language Google Refine Expression Language (GREL) 

```
value.replace(/(\d{4})-\d{4}, (\d{4})/, '$1/$2')
```

No syntax error.

**Preview**

[History](#)

[Starred](#)

[Help](#)

row	value	value.replace(/(\d{4})-\d{4}, (\d{4})/, '\$1/\$2')
599.	1905-1938, 1947	1905/1947
834.	1976-1977, 1983	1976/1983
925.	1948-1959, 1974	1948/1974
945.	1990-1991, 1993	1990/1993
1022.	1999-2000, 2002	1999/2002
1112.	1988-1996, 2001	1988/2001
1447.	1987-1998, 2002	1987/2002

```
value.replace(/(\d{4})-\d{4}, (\d{4})/, '$1/$2')
```



# More regular expressions

[A-Za-z] - any letter, upper or lower case

[A-Za-z]{6} - six letters

[A-Za-z]+ - any number of letters in a row

\d - any digit

\d{4} - 4-digit date

[A-Za-z]+ \d{1,2}, \d{4} - date format like July 17, 1979

^\d{4} - begins with a 4-digit date

# More regular expressions

- see [regexr.com](https://regexr.com) for more examples, and you can even test out expressions in their interface.



Woman at International Ladies Garment Workers Union march - <http://hdl.handle.net/1903.1/32553>

# Challenges

- Spreadsheets not in the same format as those from The Beast
  - (plus, we had a converter we could use to get from The Beast to EAD)
- No .csv import of finding aid data function native in ArchivesSpace
  - Plugins available, but that required developer time that was not available

# Steady converts CSV into EAD XML

## Upload

Choose a CSV file to upload. The file must have headers which conform to the [stead schema](#). If you have your container list data in Excel, you will need to export it as CSV before uploading it.

You can try it out with a [sample CSV file](#).

Name\*

Email\*

Organization

CSV\*

No file chosen

To import into ArchivesSpace and have instances created properly, you may need to make some other changes to the EAD. You can select and fill out the following options to try to do that for you. This is currently an experimental feature.

Add identifiers to containers for parent/child relationships?

archdesc/did/unitid

## About

### Use Cases

In most cases tools like ArchivesSpace are preferred because they centralize and normalize the creation of archival description and arrangement. We have two main use cases for maintaining container lists in spreadsheets instead of working directly in ArchivesSpace.

1. Sometimes donors provide container lists for their collections as a spreadsheet. In other cases hired appraisers will provide detailed spreadsheets which could also be used as container lists. We want to be able to edit those as little as possible to allow them to form the basis of a preliminary inventory. In this way in MPLP-style we can make the collection accessible as quickly as possible.
2. NCSU Libraries stores some of its architectural collections like drawings in off-site storage. With poor wireless coverage in some areas it is more convenient to enter container information in a spreadsheet off-line. Also this allows several people to be working on a single collection resource at one time. The spreadsheets can then be merged, exported to CSV, and transformed to EAD XML.

### Code

Steady is a Ruby on Rails application and is available as open source software. [See the full source code](#).

### Contact

This little utility was developed by Jason Ronallo as part of his work at NCSU Libraries.

Email: [jronallo@gmail.com](mailto:jronallo@gmail.com)

<http://steady2.herokuapp.com/>

# Stead schema

These are the allowable values for the CSV header row. All values apply at the container level except the values that apply to the series or subseries level.

**series title**  
**series number**  
**series dates**  
**subseries number**  
**subseries title**  
**subseries dates**  
**file id**  
**file title**  
**file dates**  
**extent**  
**physdesc**  
**internal only**  
**restrictions**  
**conditions governing access**  
**scopecontent**  
**note1**  
**note2**

**instance type**  
**container 1 type**  
**container 1 number**  
**container 2 type**  
**container 2 number**  
**container 3 type**  
**container 3 number**  
**geogname**  
**geogname\_source**  
**corpname**  
**corpname\_source**  
**famname**  
**famname\_source**  
**name**  
**name\_source**  
**persname**  
**persname\_source**  
**subject**  
**subject\_source**



by owlpacino ([CC-BY-ND 2.0](https://creativecommons.org/licenses/by-nd/2.0/))  
<https://flic.kr/p/6vwycW>





## Additional arguments

- Collection level
  - Resource id
  - Extent
  - Scope
  - Normalized dates

```
#!/usr/bin/env ruby
```

```
$LOAD_PATH.unshift File.join(File.dirname(__FILE__), '..', 'lib')  
require 'pp'  
require 'stead'  
require 'trollop'
```

```
opts = Trollop::options do  
  banner <<-EOS
```

```
This script takes a csv file with a name in the format <eadid>_container_list.csv  
and creates a stub EAD XML document.
```

Usage:

```
csv2ead --csv /path/to/<eadid>_container_list.csv [options]
```

where options are:

EOS

```
opt :csv, "A CSV file", :required => true, :type => String  
opt :baseurl, 'Base URL for adding on the eadid', :type => String  
opt :url, 'Full URL for this collection guide', :type => String  
opt :template, 'Specify using a different EAD XML template', :type => String  
opt :ncsu, 'Use NCSU specific template'  
opt :extra, 'Full path to a Stead::Extra file to add in other data', :type => String  
opt :output, 'Save the file by specifying the filename', :type => String  
opt :pretty, 'If --output is specified this will pretty indent the container list.'  
opt :stdout, 'Output full EAD to terminal'  
opt :idcontainers, 'Add id attributes to containers to show parent child relationships among containers in same com  
opt :unittitle, 'Add a unittitle to ead/eadheader/archdesc/did/unittitle', :type => String  
opt :unitid, 'Add a unitid to ead/eadheader/archdesc/did/unitid', :type => String  
opt :extent, 'Add an extent to ead/eadheader/archdesc/did/physdesc/extent', :type => String  
opt :unitdate, 'Add a unitdate to ead/eadheader/archdesc/did/unitdate', :type => String  
opt :begindate, 'Add a start date to ead/eadheader/archdesc/did/unitdate/@normal', :type => String  
opt :enddate, 'Add an end date to ead/eadheader/archdesc/did/unitdate/@normal', :type => String  
opt :scope, 'Add a scopecontent note to ead/archdesc/scopecontent/p', :type => String
```

```

def collectiondate_node
  @ead.xpath('//xmlns:archdesc/xmlns:did/xmlns:unitdate').first
end

def add_normal_date
  if @begindate
    collectiondate_node['normal'] = @begindate + "/" + @enddate
  end
end

def scope_node
  @ead.xpath('//xmlns:archdesc/xmlns:scopecontent/xmlns:p').first
end

def add_scope
  if @scope
    scope_node.content = @scope
  end
end

def to_ead
  @ead = template.dup
  add_eadid
  add_eadid_url
  add_archdesc_unittitle
  add_title_proper
  add_archdesc_unitid
  add_eadid
  add_archdesc_extent
  add_normal_date
  add_archdesc_unitdate
  add_scope
  @dsc = @ead.xpath('//xmlns:archdesc/xmlns:dsc')[0]
  if series?
    add_series
    add_subseries if subseries?
  end
  @component_parts.each do |cp|
    c = node(file_component_part_name(cp))
    c['level'] = 'file'
  end
end

```

```
def add_series
  add_arrangement
  series = @component_parts.map do |cp|
    [cp['series number'], cp['series title'], cp['series dates']]
  end.uniq
  series.each do |ser|
    add_arrangement_item(ser)
    # create series node and add to dsc
    series_node = node('c01')
    @dsc.add_child(series_node)
    series_node['level'] = 'series'
    # create series did and add to series node
    series_did = node('did')
    series_node.add_child(series_did)
    unitid = node('unitid')
    unitid.content = ser[0]
    unittitle = node('unittitle')
    unittitle.content = ser[1]
    unitdate = node('unitdate')
    unitdate.content = ser[2]
    series_did.add_child(unitid)
    series_did.add_child(unittitle)
    series_did.add_child(unitdate)
  end
end
```

```
def add_series
  add_arrangement
  series = @component_parts.map do |cp|
    [cp['series number'], cp['series title'], cp['series start'], cp['series end'],
     cp['extent'], cp['scopecontent'], cp['persname'], cp['corpname'], cp['subject']]
  end.uniq
  series.each do |ser|
    add_arrangement_item(ser)
    # create series node and add to dsc
    series_node = node('c01')
    @dsc.add_child(series_node)
    series_node['level'] = 'series'
    series_node['id'] = 'series' + ser[0]
    # create series did and add to series node
    series_did = node('did')
    series_node.add_child(series_did)
    unitid = node('unitid')
    unitid.content = ser[0]
    unittitle = node('unittitle')
    unittitle.content = ser[1]
    series_did.add_child(unitid)
    series_did.add_child(unittitle)

    unitdate = node('unitdate')
    if ser[2]
      unitdate.content = ser[2] + '-' + ser[3]
      unitdate['normal'] = ser[2] + '/' + ser[3]
      series_did.add_child(unitdate).attr('normal')
    end
  end
end
```

```
physdesc = node('physdesc')
extent= node('extent')
if ser[4]
  extent.content = ser[4]
  series_did.add_child(physdesc)
  physdesc.add_child(extent)
end

scopecontent = node('scopecontent')
series_node.add_child(scopecontent)
if ser[5]
  serieshead = node('head')
  scopecontent.add_child(serieshead)
  serieshead.content= 'Scope and Contents'
  p = node('p')
  scopecontent.add_child(p)
  p.content = ser[5]
end

controlaccess = node('controlaccess')
series_node.add_child(controlaccess)
if ser[6]
  ser[6].split(';').each do |c|
    persname = node('persname')
    controlaccess.add_child(persname)
    persname << c
  end
end

if ser[7]
  ser[7].split(';').each do |c|
    corpname = node('corpname')
    controlaccess.add_child(corpname)
    corpname << c
  end
end

if ser[8]
  ser[8].split(';').each do |c|
    subject = node('subject')
    controlaccess.add_child(subject)
    subject << c
  end
end
```

# Lessons Learned

- Steady/Stead fits wide range of skill
- Reuse, reuse, reuse

# Wrap-up

- OpenRefine
  - Date normalization!
  - Extent normalization!
  - Controlled vocabs!
  - Regular Expressions!
- Steady/Stead
  - template for converting .csv to EAD XML!



# Questions?

Thanks!

[blparker@umd.edu](mailto:blparker@umd.edu)