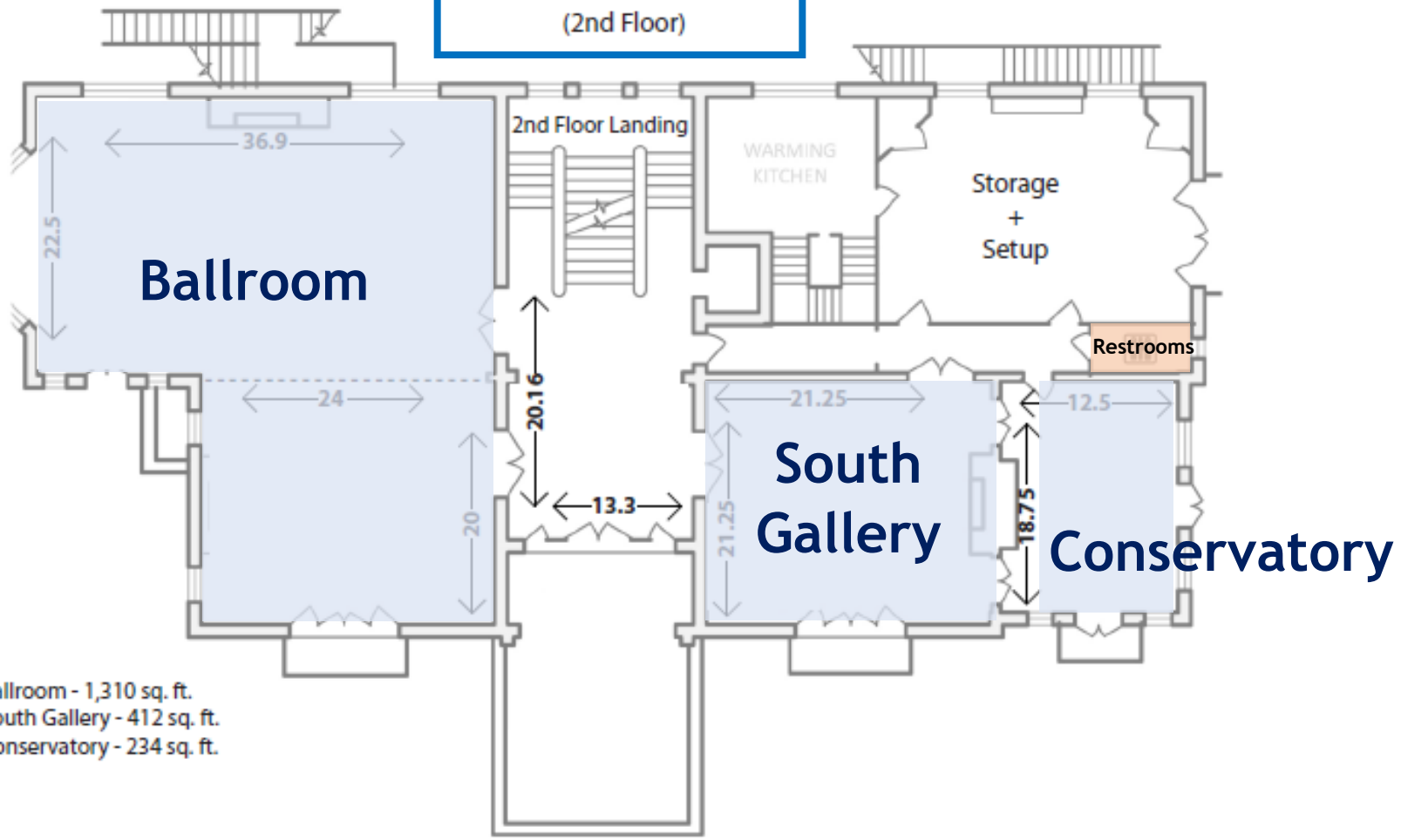


The Josephine Butler  
Parks Center  
(1st Floor)

The Josephine Butler  
Parks Center  
(2nd Floor)



Ballroom - 1,310 sq. ft.  
South Gallery - 412 sq. ft.  
Conservatory - 234 sq. ft.

**2nd Floor Landing**  
Edge to Edge Length - 15 ft.  
Stairway Opening Width - 5 ft. 10 in.  
Depth Edge of Landing to Wall - 5 ft. 2 in.

**Terrace**  
Door to Street Edge - 24 ft.  
Door to Street Side of Post (covered area) - 7 ft. 10 in.  
Width Edge to Edge - 15 ft. 10 in.  
Width between Posts: 5 ft. 10 in.